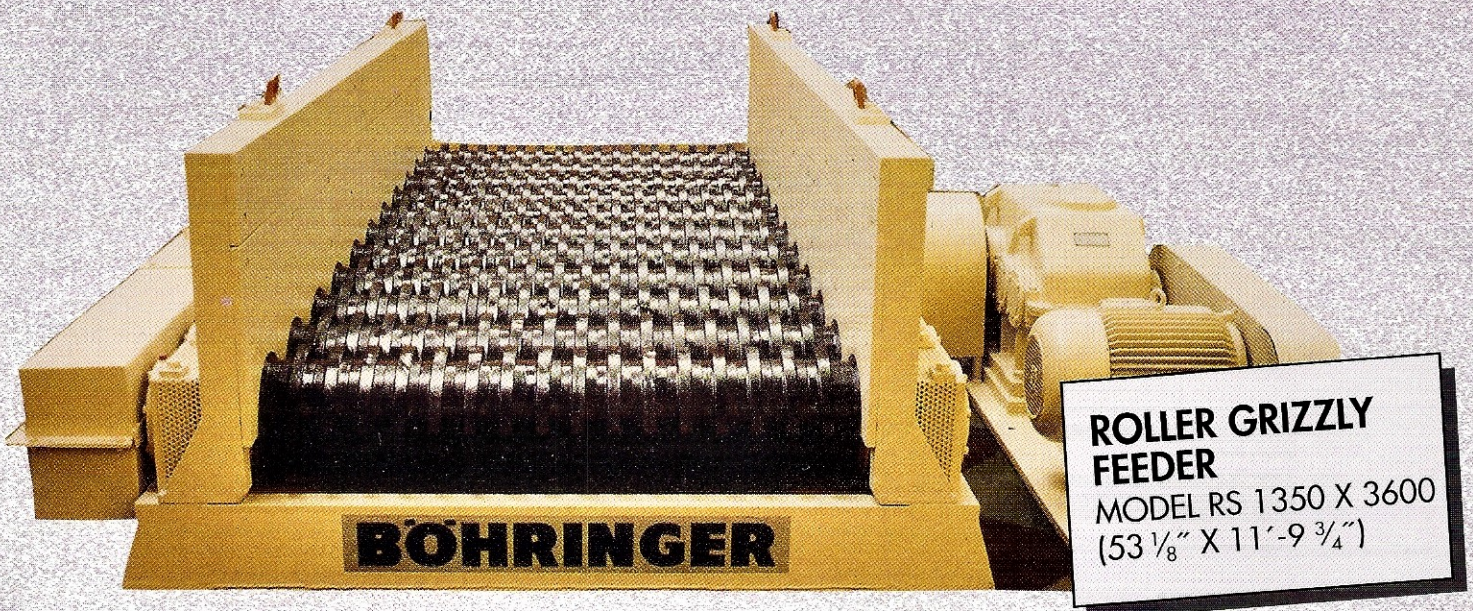


# BOHRINGER

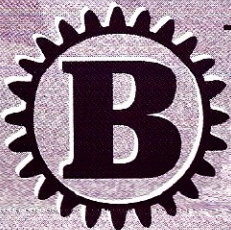
## ROLLER GRIZZLY FEEDERS

### SERIES "RM" AND "RS"

Heavy duty feeder scalper for contaminated (wet, sticky or dry) raw materials.



- Uniform feed rate
- Low headroom
- Low horsepower
- No vibration
- Replaceable push-on discs of wear resistant alloy
- Adjustable Scrapers
- Heavy duty solid square shafts and short roller chains
- Long wear life due to special alloy castings
- High performance, High capacity
- Low per ton operating cost
- Made in America



#### BOHRINGER, INC.

121 Main Street STE 140 Northport New York 11768 USA

Tel (631) 262 7211 Email bohringer1@aol.com - [www.bohringerinc.com](http://www.bohringerinc.com)



The Roller Grizzly Feeder is generally used as a primary scalper between a vibrating, reciprocating, or apron feeder and a crusher. The unique tumbling action of the discs assures a most efficient separation of fines and conglomerates from the quarried or mined raw material.



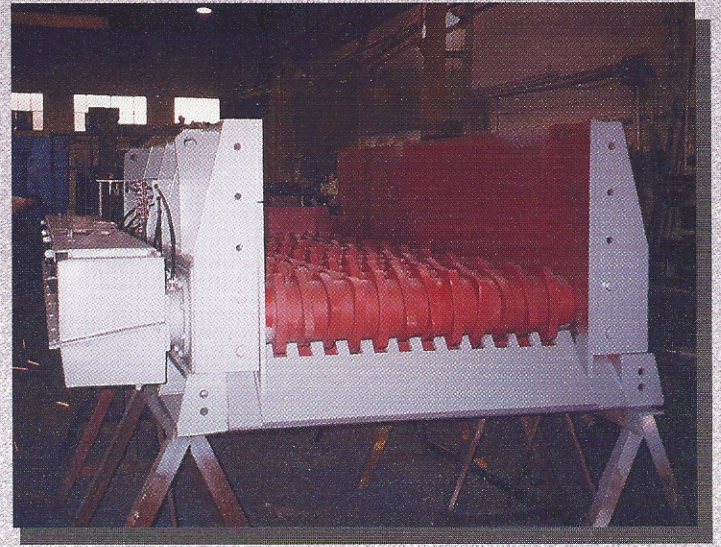
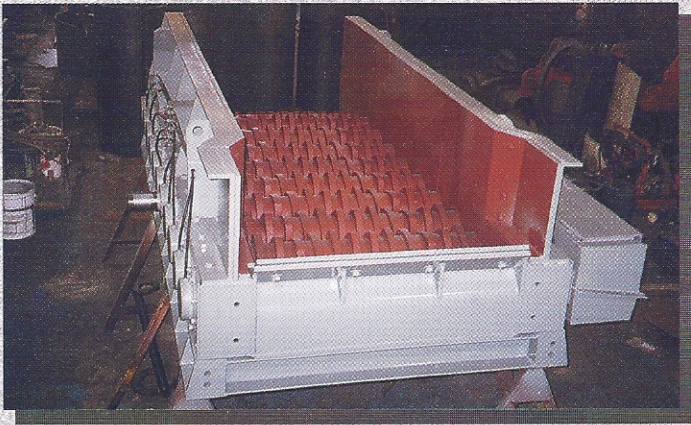
Compared to conventional screens or grizzlies, these machines resist clogging in wet or sticky materials and provide self-cleaning of the discs. Material production has been known to increase upwards of 50% due to the scalping efficiency of the roller grizzly feeder which removes the fines and only feeds oversize to the crusher. This furthermore reduces wear cost, since the abrasive fines are removed ahead of the crusher. The heavy duty construction of the roller grizzly feeder offers high availability, top efficiency and low maintenance.



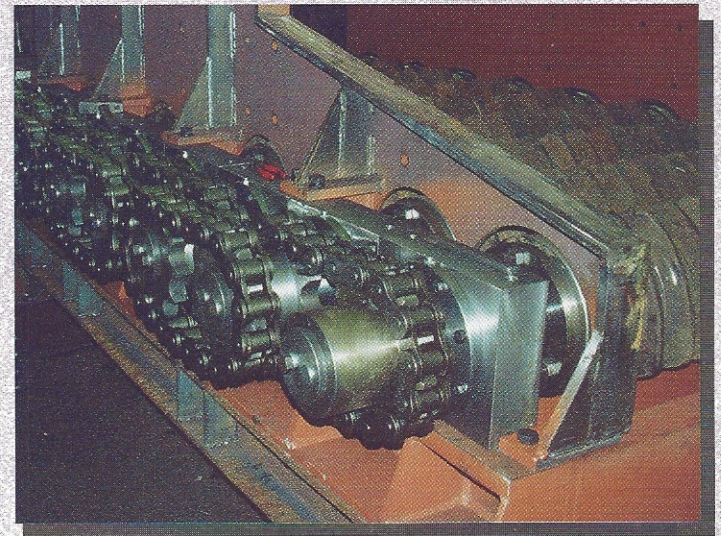
Replaceable cast discs are stacked on the square shafts. Different shapes of discs are available depending on the specific application. The individual shafts are driven through short roller chains (one chain turning two shafts) which are running in an enclosed oil bath. Adjustable scrapers are located under the shafts to prevent plugging and build up between the discs.

## The Roller Grizzly Feeder consists of:

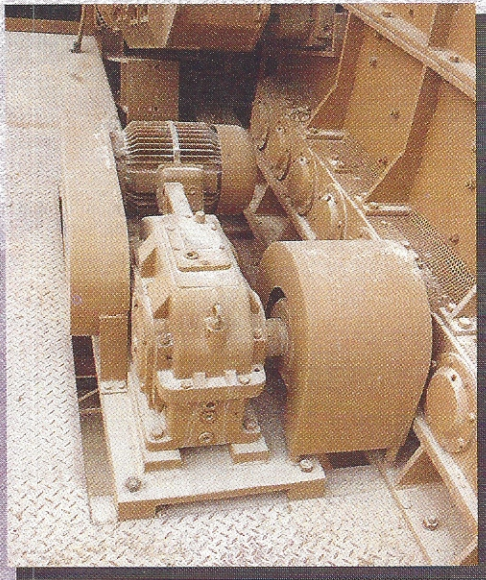
- heavy duty one-piece welded steel frame
- side walls with bolt-on replaceable wear plates
- solid square shafts with push-on discs of special alloy
- bearing assemblies to support the shafts
- sprockets and chains to turn the shafts
- chain guard with oil bath
- drive assembly with electric motor



The lower frame has two pedestals for mounting the bolt-on bearing housings. Large spherical roller bearings with labyrinth rings and dust seals support the square shafts.



The roller grizzly feeder, in its standard configuration, is driven through an electric motor, vee-belt drive and gear reducer. Its output shaft is connected to the feeder input shaft by a flexible coupling. Variable speed drive is available upon request.



## ROLLER GRIZZLY FEEDER

Series "RM" - Feed size up to 1000 mm (40") edge length; max. drop height 750 mm (29")

| MODEL<br>Width-Length<br>mm | inches |             | No. of Shafts | Motor (HP) | Approx.<br>Weight (Lbs)* |
|-----------------------------|--------|-------------|---------------|------------|--------------------------|
|                             |        |             |               |            |                          |
| 950 x 4600                  | 37 1/2 | x 181 1/8   | 19            | 2 x 20     | 20,500                   |
| 950 x 5100                  | 37 1/2 | x 200 3/4   | 19            | 2 x 20     | 25,600                   |
| 950 x 5300                  | 37 1/2 | x 208 11/16 | 22            | 2 x 20     | 22,900                   |
| 1030 x 2050                 | 40 1/2 | x 80 3/4    | 7             | 10         | 12,500                   |
| 1030 x 2300                 | 40 1/2 | x 90 1/2    | 8             | 10         | 13,900                   |
| 1030 x 2550                 | 40 1/2 | x 100 3/8   | 9             | 10         | 15,400                   |
| 1070 x 3100                 | 42 1/8 | x 122 1/16  | 11            | 20         | 16,500                   |
| 1070 x 5350                 | 42 1/8 | x 210 5/8   | 20            | 30         | 28,600                   |
| 1190 x 6600                 | 46 7/8 | x 259 7/8   | 25            | 2 x 20     | 41,100                   |
| 1220 x 2650                 | 48     | x 104 5/16  | 9             | 15         | 17,300                   |
| 1270 x 2050                 | 50     | x 80 3/4    | 7             | 10         | 12,800                   |
| 1270 x 2300                 | 50     | x 90 1/2    | 8             | 10         | 14,100                   |
| 1270 x 2550                 | 50     | x 100 3/8   | 9             | 15         | 15,800                   |
| 1270 x 2800                 | 50     | x 110 1/4   | 10            | 15         | 17,500                   |
| 1270 x 3050                 | 50     | x 120       | 11            | 15         | 19,100                   |
| 1270 x 3300                 | 50     | x 130       | 12            | 20         | 20,800                   |
| 1270 x 3550                 | 50     | x 139 3/4   | 13            | 20         | 22,400                   |
| 1270 x 3800                 | 50     | x 149 5/8   | 14            | 20         | 24,100                   |
| 1350 x 2300                 | 53 1/8 | x 90 1/2    | 8             | 15         | 15,300                   |
| 1350 x 2550                 | 53 1/8 | x 100 3/8   | 9             | 15         | 17,100                   |
| 1350 x 2800                 | 53 1/8 | x 110 1/4   | 10            | 15         | 18,900                   |
| 1350 x 3050                 | 53 1/8 | x 120       | 11            | 15         | 20,500                   |
| 1350 x 3300                 | 53 1/8 | x 130       | 12            | 20         | 22,300                   |
| 1350 x 3550                 | 53 1/8 | x 139 3/4   | 13            | 20         | 24,100                   |
| 1350 x 3800                 | 53 1/8 | x 149 5/8   | 14            | 20         | 25,800                   |
| 1350 x 4200                 | 53 1/8 | x 165 3/8   | 15            | 30         | 31,000                   |
| 1350 x 6100                 | 53 1/8 | x 240 3/16  | 23            | 2 x 25     | 43,000                   |
| 1510 x 3050                 | 59 1/2 | x 120       | 11            | 20         | 22,200                   |
| 1510 x 3300                 | 59 1/2 | x 130       | 12            | 20         | 24,100                   |
| 1510 x 3550                 | 59 1/2 | x 139 3/4   | 13            | 25         | 25,900                   |
| 1510 x 3800                 | 59 1/2 | x 149 5/8   | 14            | 25         | 27,600                   |
| 1510 x 4200                 | 59 1/2 | x 165 3/8   | 15            | 30         | 29,600                   |
| 1510 x 9000                 | 59 1/2 | x 181 1/8   | 34            | 2 x 30     | 67,600                   |
| 1800 x 6500                 | 70 7/8 | x 255 15/16 | 24            | 2 x 30     | 55,000                   |

## ROLLER GRIZZLY FEEDER

Series "RS" - Feed size up to 1500 mm (60") edge length; max. drop height 1000 mm (40")

| MODEL<br>Width-Length<br>mm | inches |           | No. of Shafts | Motor (HP) | Approx.<br>Weight (Lbs)* |
|-----------------------------|--------|-----------|---------------|------------|--------------------------|
|                             |        |           |               |            |                          |
| 1220 x 4700                 | 48     | x 185     | 12            | 30         | 37,000                   |
| 1220 x 5042                 | 48     | x 198 1/2 | 14            | 2 x 25     | 41,000                   |
| 1350 x 3000                 | 53 1/8 | x 118 1/8 | 9             | 15         | 25,900                   |
| 1350 x 3300                 | 53 1/8 | x 130     | 10            | 20         | 28,300                   |
| 1350 x 3600                 | 53 1/8 | x 141 3/4 | 11            | 25         | 30,600                   |
| 1350 x 4000                 | 53 1/8 | x 157 1/2 | 12            | 30         | 32,900                   |
| 1350 x 4330                 | 53 1/8 | x 170 1/2 | 13            | 2 x 25     | 38,100                   |
| 1450 x 3000                 | 57 1/8 | x 118 1/8 | 9             | 20         | 26,100                   |
| 1450 x 3300                 | 57 1/8 | x 130     | 10            | 25         | 28,500                   |
| 1450 x 3400                 | 57 1/8 | x 133 7/8 | 10            | 25         | 32,900                   |
| 1450 x 3600                 | 57 1/8 | x 141 3/4 | 11            | 25         | 30,900                   |
| 1450 x 4000                 | 57 1/8 | x 157 1/2 | 12            | 30         | 33,300                   |
| 1530 x 3300                 | 60 1/4 | x 130     | 10            | 25         | 28,600                   |
| 1530 x 3600                 | 60 1/4 | x 141 3/4 | 11            | 25         | 31,100                   |
| 1530 x 4000                 | 60 1/4 | x 157 1/2 | 12            | 30         | 33,700                   |
| 1530 x 5000                 | 60 1/4 | x 196 7/8 | 15            | 40         | 39,700                   |
| 1570 x 3700                 | 61 7/8 | x 145 3/4 | 11            | 30         | 31,900                   |
| 1610 x 3300                 | 63 3/8 | x 130     | 10            | 30         | 31,500                   |
| 1610 x 3600                 | 63 3/8 | x 141 3/4 | 11            | 30         | 34,300                   |
| 1610 x 4000                 | 63 3/8 | x 157 1/2 | 12            | 30         | 37,200                   |
| 1610 x 4300                 | 63 3/8 | x 169 1/4 | 13            | 30         | 39,900                   |
| 1800 x 3600                 | 70 7/8 | x 141 3/4 | 11            | 30         | 34,300                   |
| 1800 x 4000                 | 70 7/8 | x 157 1/2 | 12            | 40         | 37,400                   |
| 1800 x 4700                 | 70 7/8 | x 185     | 14            | 40         | 42,100                   |
| 2000 x 4000                 | 78 3/4 | x 157 1/2 | 12            | 40         | 39,700                   |

\*Note: Weight changes with gap opening between discs. Design specifications subject to change without notice. Technical data are approximates and should be used as a guide only. Capacity and power requirements depend on the type and characteristics of the feed material.



**BOHRINGER, INC.**

121 Main Street STE 140 Northport New York 11768

Tel (631) 262 7211- Email bohringer1@aol.com - www.bohringerinc.com