



# BÖHRINGER

Böhlinger is a minerals processing technology and services supplier for the Global mining, aggregates and recycling industries.

[WWW.BOHRINGERINC.COM](http://WWW.BOHRINGERINC.COM) COMPANY CONFIDENTIAL "ALL RIGHTS ARE RESERVED"



# About Böhrringer

Böhrringer. GMBH, was first Founded In Oedheim West Germany in 1948 by the Late Paul Böhrringer. From there Böhrringer. Gmbh became a respected World leader through its innovative product offering in the international Mining Recycling and aggregate processing World. Today Böhrringer equipment can be found in operation In every corner of the Globe.

Böhrringer first entered the North American market in July of 1984 through its subsidiary, "Böhrringer Inc." owned by its President Mr. Thomas M. Hecker. In 1996 Böhrringer Gmbh ceased operation due to a shrinking European Market for High end Systems. At this time Böhrringer Inc. acquired Sole rights to the Böhrringer Brands initially successfully supply a thriving US market with Foresight Böhrringer Inc. introduced the company's vast experience, know-how and technology in processing equipment systems to the American Aggregate & Recycled product producer and later to a growing International market.

Based on Böhrringer Inc. equipment criteria, and flexibility to adapt aggregate processing Systems' to customer's individual needs, and a steady, stable growth pattern, Böhrringer have been able to supply systems' at market price with advanced operating benefits. So far, Böhrringer Inc. conservatively have placed well in excess' of 350 specialized & standard systems' in various industries, with repeated sales to individual and group customers. Böhrringer Inc. has over 43 years of US and World product application knowledge.

A number of strategically situated Global Distributors' with Professional and experienced sales personnel in aggregate processing equipment have been engaged over the years for the stocking & marketing of our systems and spare parts. As of late all our equipment is being manufactured & assembled in North America, Europe and Asia. Major changes are taking place within Böhrringer creating a evolving focus on improving quarry/contractor operations, with an emphasis on applications, process, correct equipment selection and quality related issues arising in everyday aggregate production.

V lq fhhoj #E rku lq j h#q fl



Global Supply.



Paul Bohringer & Thomas Hecker in 1991.



# Introduction.

Böhringer have been manufacturing Premier Material handling/process equipment for two thirds of a century, pioneering the advancement of how mineral's and reusable materials are processed today.



Put Böhringer at the heart of your operation.





# Installations



*Stationary Aggregate processing Plants*



*Skid Mounted Recycling processing Plants*



*Crawler Aggregate processing Plants*



*Wheel / Track Combo Aggregate processing Plants*



# Installations - Stein Expo



*Stein Expo Europe 90's*



*Coral Rock Crawler plant Application USA*



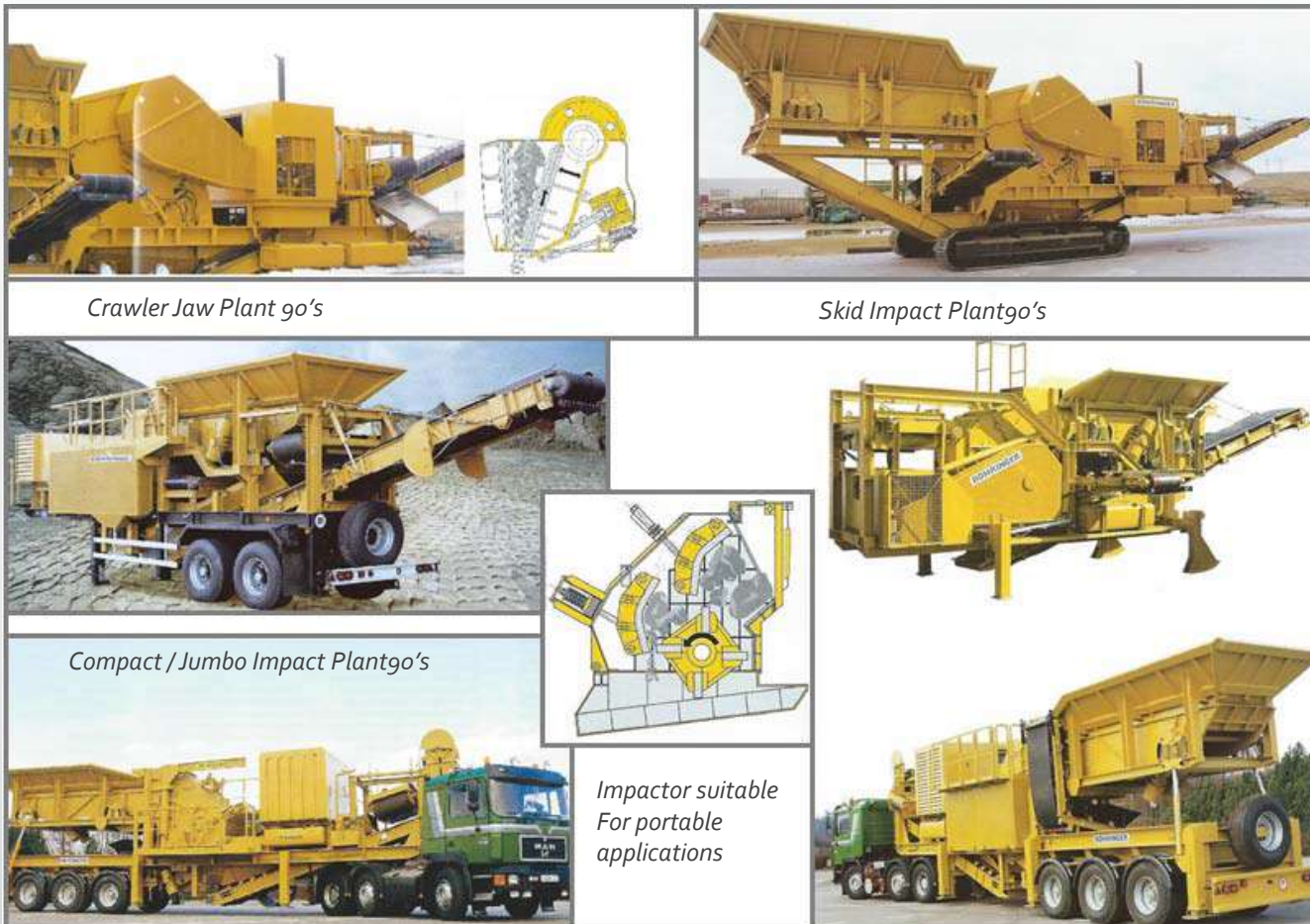
*Portable Aggregate Plant USA*



*Granite Application Dubai UAE 2008*



# Plant Examples



Böhlinger equipment was extensively used throughout Germany post 1945.

The Böhlinger product range is attributed to the foresight and resilience of Paul Böhlinger, the hugely successful construction equipment company that bears his name. The name itself has become a word in its own right that defined inertia crushing and screening equipment that bare his name.

In the early 90's Böhlinger equipment was the name to go to for aggregate processing equipment throughout Germany following the historic unification of his native land.

Böhlinger entered an agreement with Zeppelin the National CAT distributor to market Böhlinger equipment through Germany Austria Switzerland and Poland.



**BÖHLINGER**

# Product information Publications

Böhringer in the 1950's through to the 1990's

*"The original imitated by many never surpassed!"*



**BÖHRINGER**



# Decision Guide

Heavy Duty Primary Series Impactor's 100 – 1000 tp/h range.



## **BOHRINGER** IMPACT CRUSHERS

### PRIMARY SERIES "PB" AND "RC"

For Aggregates, Medium Hard Rock and Ores



- Made in America
- The ONLY Original BOHRINGER Impactor
- Since 1945



**BOHRINGER, INC.**  
121 Main Street STE 140 Northport New York 11768 USA  
Tel (631) 262 7211 - Email bohringer1@aol.com - www.bohringerinc.com

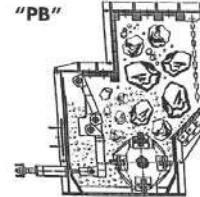
- Excellent Rotor Warranty
- Bar & Cap System Available
- Large Expansion Chamber
- Hydraulic Feed Plate Available
- Hydraulic Housing Opening
- Selective crushing
- Cubical, crack free, uniform product
- High performance, high capacity
- High reduction ratio
- Low per ton operating cost
- Long wear life due to special alloy castings



## **BOHRINGER** IMPACT CRUSHERS PRIMARY SERIES "PB" AND "RC"

- These heavy duty primary impactors are used in mining and quarry operations for medium hard materials.
- The innovative design features, use of high wear resistant castings and utilization factor of the wear parts make this horizontal shaft, fixed blow bar impactor superior to any crusher of this type available today. Depending on the specific application the machine can be equipped with different interior parts.
- The housings contain 2 or 3 stage aprons for maximum reduction ratios. Depending on the application, the aprons are one-piece casting or fabricated with bolt-on Impact plates. Aprons with automatic hydraulic/accumulator systems are available.
- Both aprons are gravity hung for tramp iron release, hydraulically adjustable towards the blow bars, to maintain a constant gap and thus assure a uniform product size.
- Third impact apron available to achieve lower percentage of oversize and more cubical product.
- The rotors are solid steel welded design with 2, 3, 4 or 6 rows of blow bars, they provide high WR<sup>2</sup> for selective ratio of reduction crushing. Capacities range from 10 to 1500 tons per hour.
- New style threaded blow bar locking rod for easier replacement of bars. New style blow bar locking plate for easier maintenance.
- Hinged crusher housing with hydraulic opening providing ease of maintenance. Dual split opening allows easy access to front or rear apron.

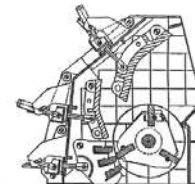
### "PB"



MODEL	ROTOR DIA. (INCH) WIDTH	FEED OPENING (INCH)	CAPACITY (STPH)	POWER REQUIRED (HP)	WEIGHT APPROX. (LBS)
PB 2000/1600	63 x 80	80 x 99	600 - 1200	500 - 1000	185,200
PB 1800/1500	59 x 73	73 x 99	500 - 800	400 - 800	147,300
PB 1600/1500	59 x 64	63 x 75	400 - 650	300 - 700	134,500
PB 1450/1300	52 x 58	57 x 75	300 - 550	250 - 600	78,500
PB 1300/1200	48 x 52	53 x 67	250 - 385	200 - 300	65,700
PB 1200/1100	45 x 47	49 x 59	200 - 350	200 - 300	55,400

Design specifications subject to change without notice. Technical data are approximate and should be used as a guide only. Capacity and power requirements depend on the type and characteristics of the feed material.

### "RC"



MODEL	ROTOR DIA. (INCH) WIDTH	FEED OPENING (INCH)	CAPACITY (STPH)	POWER REQUIRED (HP)	WEIGHT APPROX. (LBS)
RC - 10/CH	44 1/4 x 41 3/4	48 x 42	100 - 250	125 - 250	34,500
RC - 12/CH	44 1/4 x 47 1/4	48 x 48	150 - 300	175 - 350	41,300
RC - 1450/130	52 x 58	50 x 57	175 - 350	200 - 400	67,600
RC - 16/130	52 x 63	44 x 64	275 - 450	250 - 500	63,000
RC - 16/160	63 x 64	51 x 64	275 - 450	250 - 500	77,500
RC - 18/160	63 x 73	51 x 72	300 - 500	300 - 700	108,900
RC - 22/200	78 1/2 x 86 1/2	59 x 89	400 - 800	300 - 750	148,800

Design specifications subject to change without notice. Technical data are approximate and should be used as a guide only. Capacity and power requirements depend on the type and characteristics of the feed material.

We offer consulting, application engineering of individual machinery and complete plants

- Stationary processing plant
- Portable recycling plant
- Modular skid mounted



**BOHRINGER**



# Decision Guide

Heavy Duty Primary Series Impactor's 100 – 1000 tp/h range.



## BOHRINGER IMPACT CRUSHERS

### PRIMARY/SECONDARY SERIES "RC"

For Aggregates, Asphalt, Concrete with Wire Mesh/  
Rebar, C&D Waste, Building Rubble

- True Solid Rotor
- Excellent Rotor Warranty
- Bar & Cap System Available
- Stock Delivery on Selected Models
- Made in America
- The ONLY Original BOHRINGER Impactor
- Since 1945

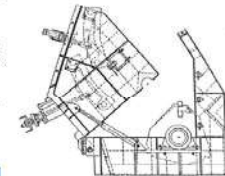
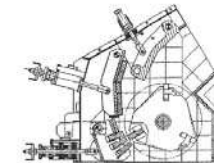
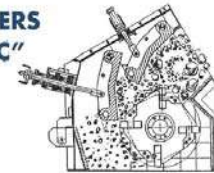
- Selective crushing
- Cubical, crack free, uniform product
- High performance, high capacity
- High reduction ratio
- Low per ton operating cost
- Long wear life due to special alloy castings

**BOHRINGER, INC.**  
121 Main Street STE140 Northport New York 11768 USA.  
Tel (631) 262 7211 - Email bohringer1@aol.com - www.bohringerinc.com



## BOHRINGER IMPACT CRUSHERS PRIMARY/SECONDARY SERIES "RC"

- These heavy duty primary/secondary Impactors are used in mining, quarry and recycling operations for medium hard materials.
- The innovative design features, use of high wear resistant castings and utilization factor of the wear parts make this horizontal shaft, fixed blow bar impactor superior to any crusher of this type available today. Depending on the specific application the machine can be equipped with different interior parts.
- The housings contain 2 or 3 stage apron for maximum reduction ratios. Depending on the application, the aprons are one-piece casting or fabricated with bolt-on impact plates. Aprons with automatic hydraulic/accumulator systems are available.
- Both aprons are gravity hung for tramp iron release, hydraulically adjustable towards the blow bars, to maintain a constant gap and thus assure a uniform product size.
- Third impact apron available to achieve lower percentage of oversize and more cubical product.
- The rotors are solid steel welded design with 2, 3, 4 or 6 rows of blow bars, they provide high WR<sup>2</sup> for selective ratio of reduction crushing. Capacities range from 10 to 1500 tons per hour.
- New style threaded blow bar locking rod for easier replacement of bars. New style blow bar locking plate for easier maintenance.



*"We make it easy  
to get into"*



- Hinged crusher housing with hydraulic opening providing ease of maintenance. Dual split opening, allows easy access to front or rear apron.

MODEL	ROTOR DIA. (INCH) WIDTH	FEED OPENING (INCH)	CAPACITY (STPH)	POWER REQUIRED (HP)	WEIGHT APPROX. (LBS)
RC 7	41 x 28	28 x 29	50 - 100	75 - 125	17,400
RC 10	44 1/2 x 41 1/2	31 x 42	100 - 175	125 - 200	30,800
RC - 10/CH	44 1/2 x 41 1/2	48 x 42	100 - 250	125 - 250	34,500
RC 12	44 1/2 x 47 1/2	37 x 48	150 - 250	175 - 300	36,800
RC - 12/CH	44 1/2 x 47 1/2	48 x 48	150 - 300	175 - 350	41,300
RC 14	50 3/4 x 55 15/16	37 x 57	175 - 275	200 - 350	42,700
RC - 1450/130	52 x 58	50 x 57	175 - 350	200 - 400	67,600
RC - 16/130	52 x 63	44 x 64	275 - 450	250 - 500	63,000
RC - 16/160	63 x 64	51 x 64	275 - 450	250 - 500	77,500
RC - 18/160	63 x 73	51 x 72	300 - 500	300 - 700	108,900
RC - 22/200	78 1/2 x 86 3/4	59 x 89	400 - 800	300 - 750	168,800

Design specifications subject to change without notice. Technical data are approximate and should be used as a guide only. Capacity and power requirements depend on the type and characteristics of the feed material.

*We offer consulting, application engineering of individual machinery and complete plants*

- Stationary processing plant
- Portable recycling plant
- Modular skid mounted



# BOHRINGER



# Decision Guide

Heavy Duty Primary Series Impactor's 100 – 1000 tp/h range.

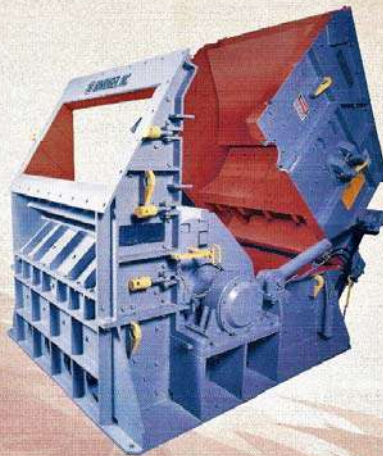


## BOHRINGER IMPACT CRUSHERS

### SECONDARY SERIES "HS"

For Aggregates, Gravel and Hard Rock

- Excellent Rotor Warranty
- Bar & Cap System Available
- Made in America
- Stock Delivery on Selected Models
- The ONLY Original BOHRINGER Impactor
- Since 1945



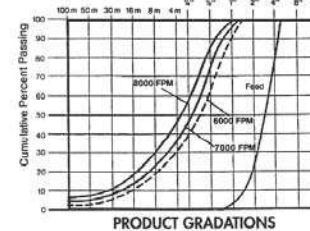
- Selective crushing
- Cubical, crack free, uniform product
- High performance, high capacity
- High reduction ratio
- Low per ton operating cost
- Long wear life due to special alloy castings



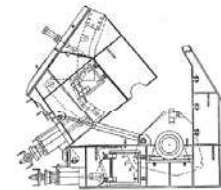
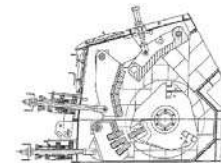
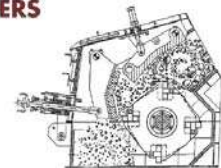
**BOHRINGER, INC.**

121 Main Street STE 140 Northport New York 11768 USA  
Tel (631) 262 7211 - Email bohringer1@aol.com - www.bohringerinc.com

## BOHRINGER IMPACT CRUSHERS SECONDARY SERIES "HS"

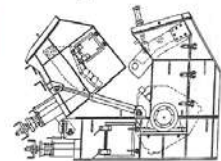


The Impact Crusher series "HS" are a heavy duty, horizontal shaft, fixed blow bar impactor, especially developed for crushing of hard and highly abrasive rocks. They are employed for secondary crushing with feed sizes from 6" to 12" and capacities from 10 to 800 TPH.



- The innovative design features, use of high wear resistant castings and utilization factor of the wear parts make this horizontal shaft, fixed blow bar impactor superior to any crusher of this type available today. Depending on the specific application the machine can be equipped with different interior parts.
- The housings contain 2 or 3 stage aprons for maximum reduction ratios. Depending on the application, the aprons are one-piece casting or fabricated with bolt-on Impact plates. Aprons with automatic hydraulic/accumulator systems are available.
- Both aprons are gravity hung for tramp iron release, hydraulically adjustable towards the blow bars, to maintain a constant gap and thus assure a uniform product size.
- Third impact apron available to achieve lower percentage of oversize and more cubical product.
- The rotors are steel disc welded design (open or closed top) with 2, 3, 4, or 6 rows of blow bars, they provide high WR2 for selective ratio of reduction crushing. Capacities range from 10 to 800 tons per hour.
- New style threaded blow bar locking rod for easier replacement of bars. New style blow bar locking plate for easier maintenance.

*"We make it easy to get into"*



- Hinged crusher housing with hydraulic opening providing ease of maintenance. Dual split opening allows easy access to front or rear apron.

MODEL	ROTOR DIA. (INCH) WIDTH	FEED OPENING (INCH)	CAPACITY (STPH)	POWER REQUIRED (HP)	WEIGHT APPROX. (LBS)
HS 21	49 1/4 x 83 1/8	85 x 28	350 - 800	400 - 700	62,400
HS 18	49 1/2 x 69 1/2	70 x 26	300 - 400	300 - 500	52,500
HS 16	49 1/4 x 63	63 x 22	275 - 350	250 - 400	55,900
HS 14	49 1/2 x 55 1/4	57 x 26	175 - 300	200 - 350	39,500
HS 10	49 1/2 x 41 3/8	42 x 19	100 - 175	125 - 200	32,300
HS 7	39 3/8 x 27 1/2	28 x 14	60 - 110	75 - 125	18,300
HS 5	31 1/2 x 20 3/4	22 x 12	30 - 60	50 - 75	8,500

Design specifications subject to change without notice. Technical data are approximates and should be used as a guide only. Capacity and power requirements depend on the type and characteristics of the feed material.

We offer consulting, application engineering of individual machinery and complete processing plants.  
• Stationary processing plant • Portable plant • Modular skid mounted



**BOHRINGER**



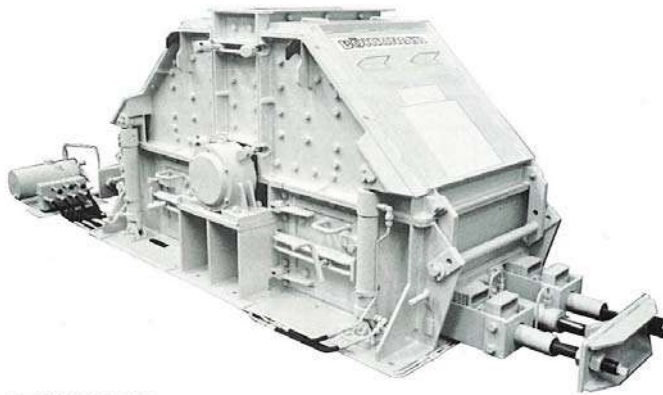
# Decision Guide

Heavy Duty Primary Series Impactor's 100 – 1000 tp/h range.



# BÖHRINGER

## Reversible Impact Crushers „HS-RV” Series for Sand and high quality Aggregate



Model HS 700 RVH

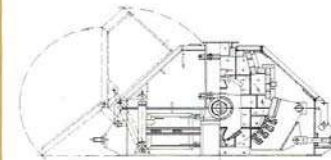
**Cubical, crack-free, high-grade product.**  
**Uniform reduction ratio through reversible rotor.**

**Ease of maintenance.**  
**Low per ton operating cost.**

Böhringer Inc.

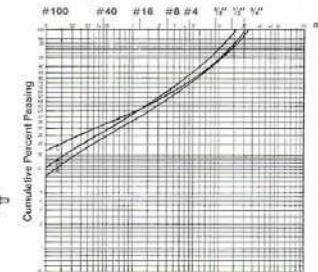
## BÖHRINGER

### Impact crushers „HS-RV” series



### Product gradations

A Gravel, B Granite, C Dolomite



Model	Rotor (Dia. (mm) Width)	Feed Opening (mm)	Max. Feed size (mm)	Capacity (tp/h)	Power required (kW)	Weight approx. (kg)
HS 500 RVH	1000 x 530	550 x 200	50	50 – 60	100 – 132	6400
HS 700 RVH	1000 x 700	720 x 200	70	60 – 80	132 – 160	7900
HS 1000 RVH	1000 x 1060	1080 x 250	70	80 – 120	160 – 200	9400

Design specifications subject to change without notice. Technical data are approximate and should be used as a guide only. Capacity and power requirements depend on the type and characteristics of the feed material.

The reversible impact crushers series „HS-RV” are a heavy duty, horizontal shaft, fixed blow bar impactor and are designed for the crushing of all types of rock to produce sand and high-grade aggregates. In most cases, these will be between 55 – 70% of minus 1/2" in the crusher product. The reversibility of the rotor along with adjustments of both impact aprons, assure a uniform product gradation during the life of the wear parts.

The design characteristics provide maximum utilization of same. Access to the interior of the machine is simplified through hydraulic opening of the upper housing sections. This reduces down-

time for turning or replacing of wear parts and increases availability. Both upper and lower wear bars are merely slid into the frame without the use of bolts or wedges.

The blow bars, made of high wear resistant castings, are reversible and insert laterally into the rotor body.

Hydraulic cylinders aid adjustment of lower impact aprons. The rotor is supported on either side by large roller bearings. These are the only lubrication points on the machine. All of the above features provide a crusher with easy maintenance, long service life and low operating cost.



## BÖHRINGER INC.

121 Main Street STE 140 Northport New York 11768 USA  
Tel (631) 262 7211 - Email bohringer1@aol.com - www.bohringerinc.com



# BÖHRINGER

Böhringer Stationary equipment is applied throughout many Industries



*Impact and Jaw  
Crusher configurations.*





























Böhringer wheel portable equipment has proven to be durable in the toughest conditions.



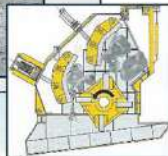
**BÖHRINGER**® HEAVY DUTY RANGE  
WHEELED PORTABLE SYSTEMS FOR ALL APPLICATIONS



**BÖHRINGER**



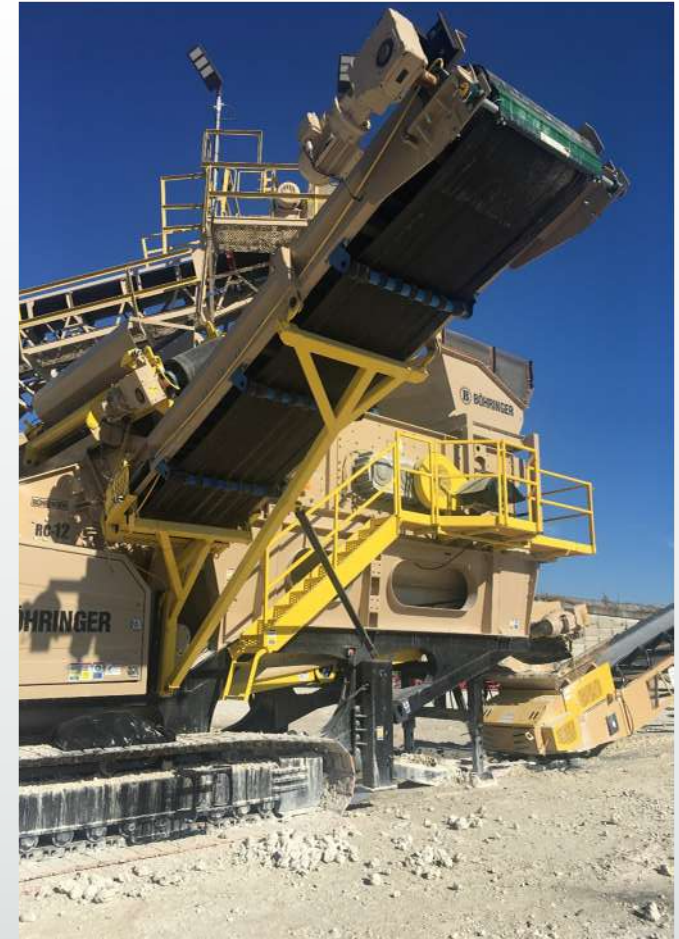
**BÖHRINGER** © Medium Duty Range.  
Track-Skid-Wheel Portable



**BÖHRINGER**® Heavy Duty  
Track portable Systems







# BOHRINGER CRAWLER CRUSHING PLANT







BOHRINGER CHAMP 120 CR RG CRAWLER  
CRUSHING PLANT - DIESEL / ELECTRIC

 **BOHRINGER**





BOHRINGER CHAMP 120 CR RG CRAWLER  
CRUSHING PLANT – DIESEL / ELECTRIC



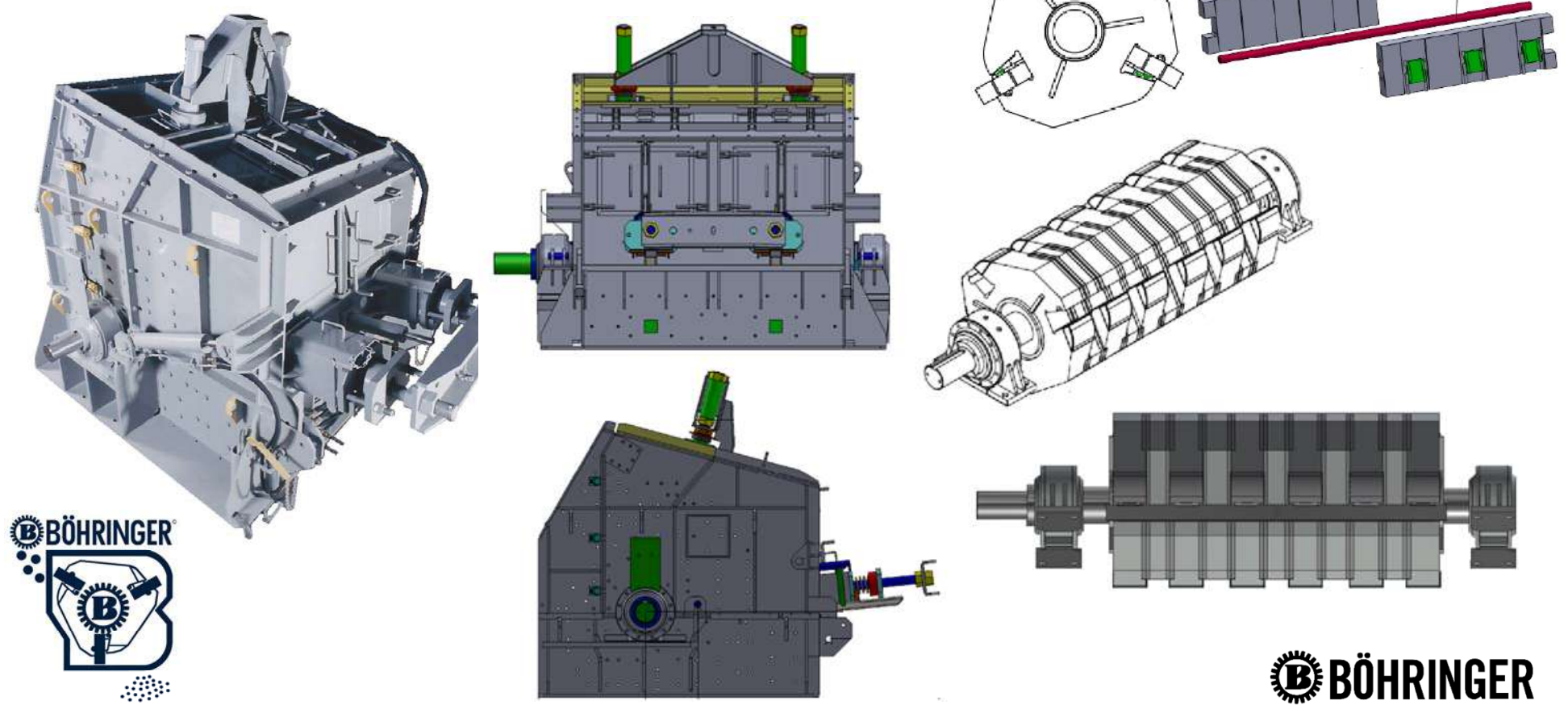




## BÖHRINGER Impact Crusher Model HS-21-2



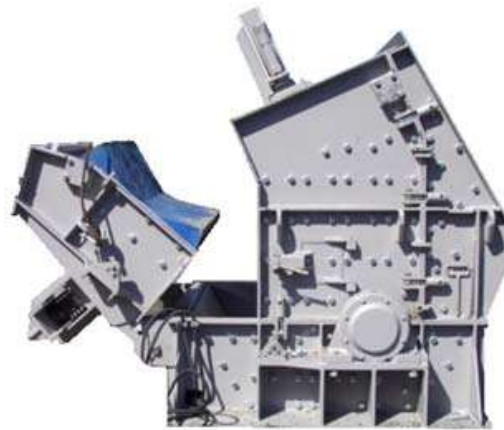
# HS-21 Series Impact Crusher + Gorilla Rotor



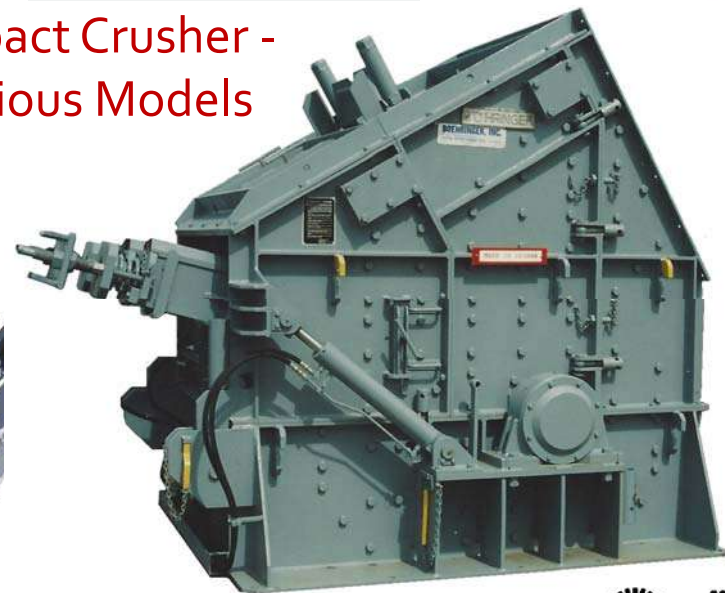


## HS-21 Series Impact Crusher



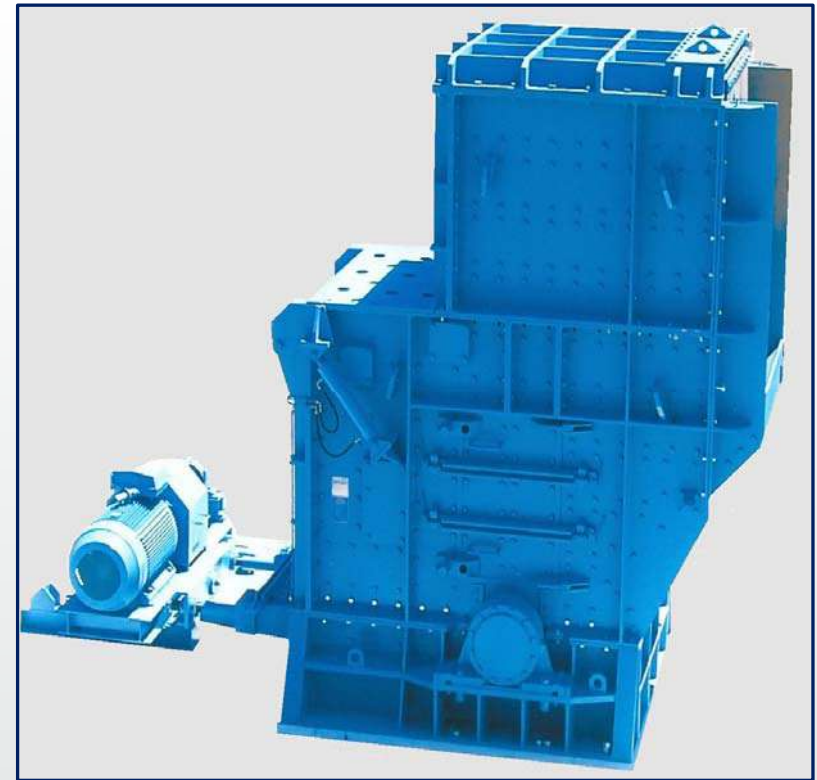


## Impact Crusher - Various Models





# *PB & RC Series Impact Crushers*



*Primary, Secondary and  
Tertiary Crushers are available.*

*Stringently engineered to endure.*



# Impact rotor configurations. *Böhringer Manufacturing Solid Rotors since 1958*



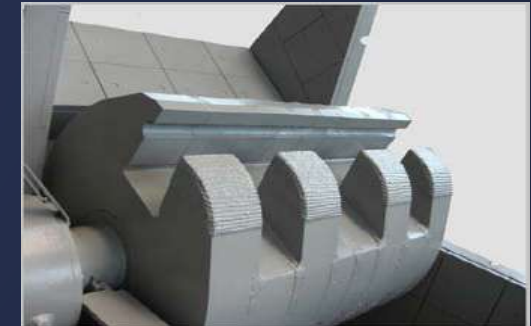
Two



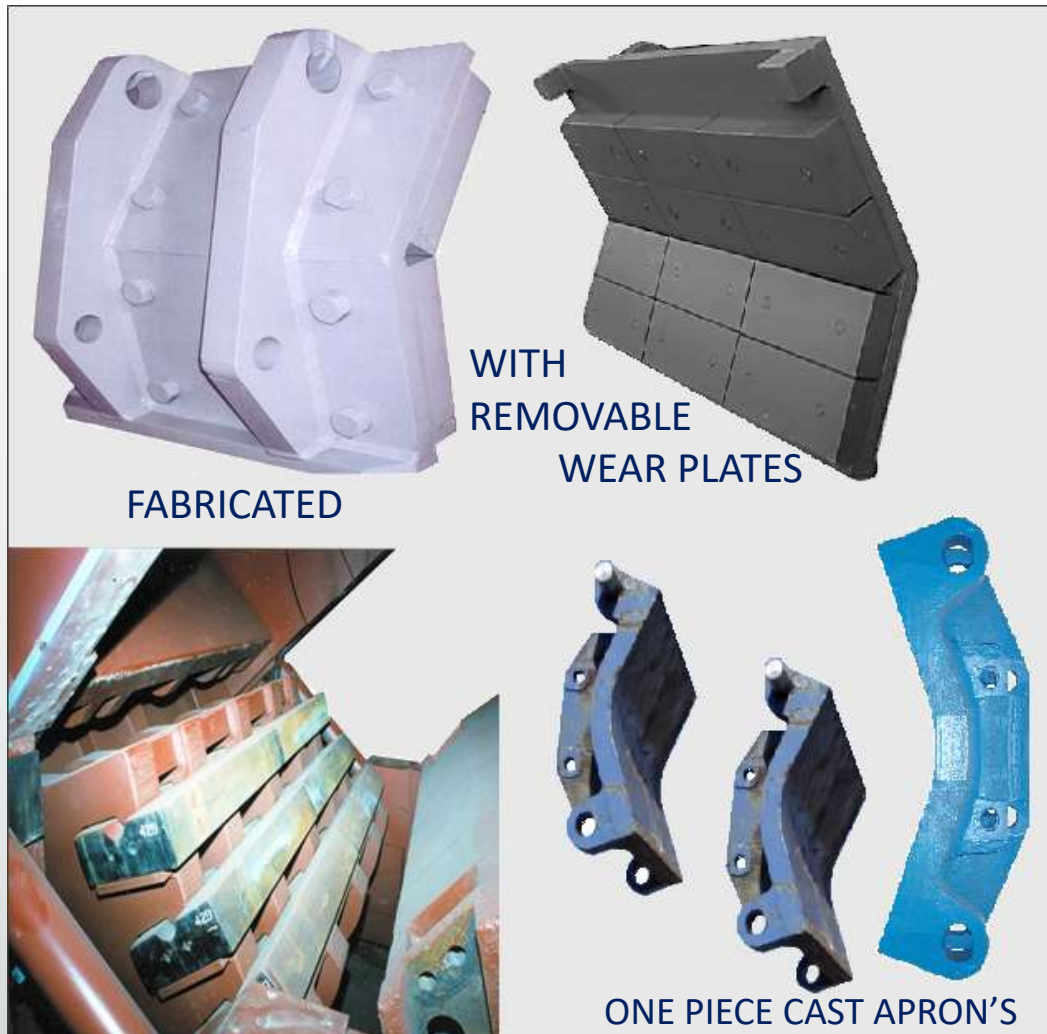
Three



Four







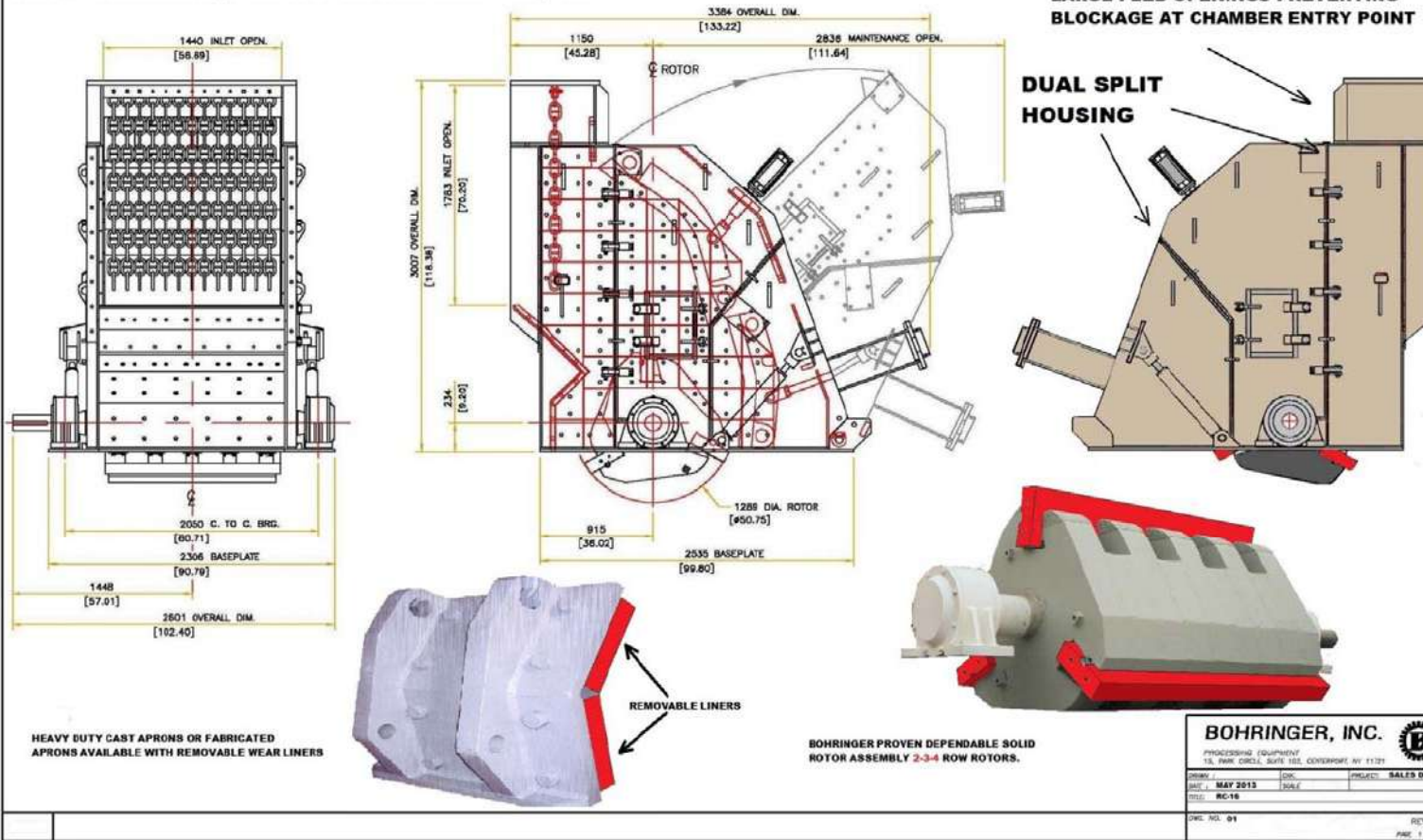
*Various Apron  
Configurations and  
Styles available.*



THIS DRAWING IS THE PROPERTY OF BOHRINGER, INC. AND IS NOT TO BE REPRODUCED OR COPIED IN WHOLE OR IN PART, OR USED FOR FURNISHING INFORMATION TO OTHERS, OR FOR ANY OTHER PURPOSE DETRIMENTAL TO THE INTEREST OF BOHRINGER, INC. AND IS TO BE RETURNED UPON REQUEST.

## IMPACT CRUSHERS THAT STAND THE TEST OF TIME !

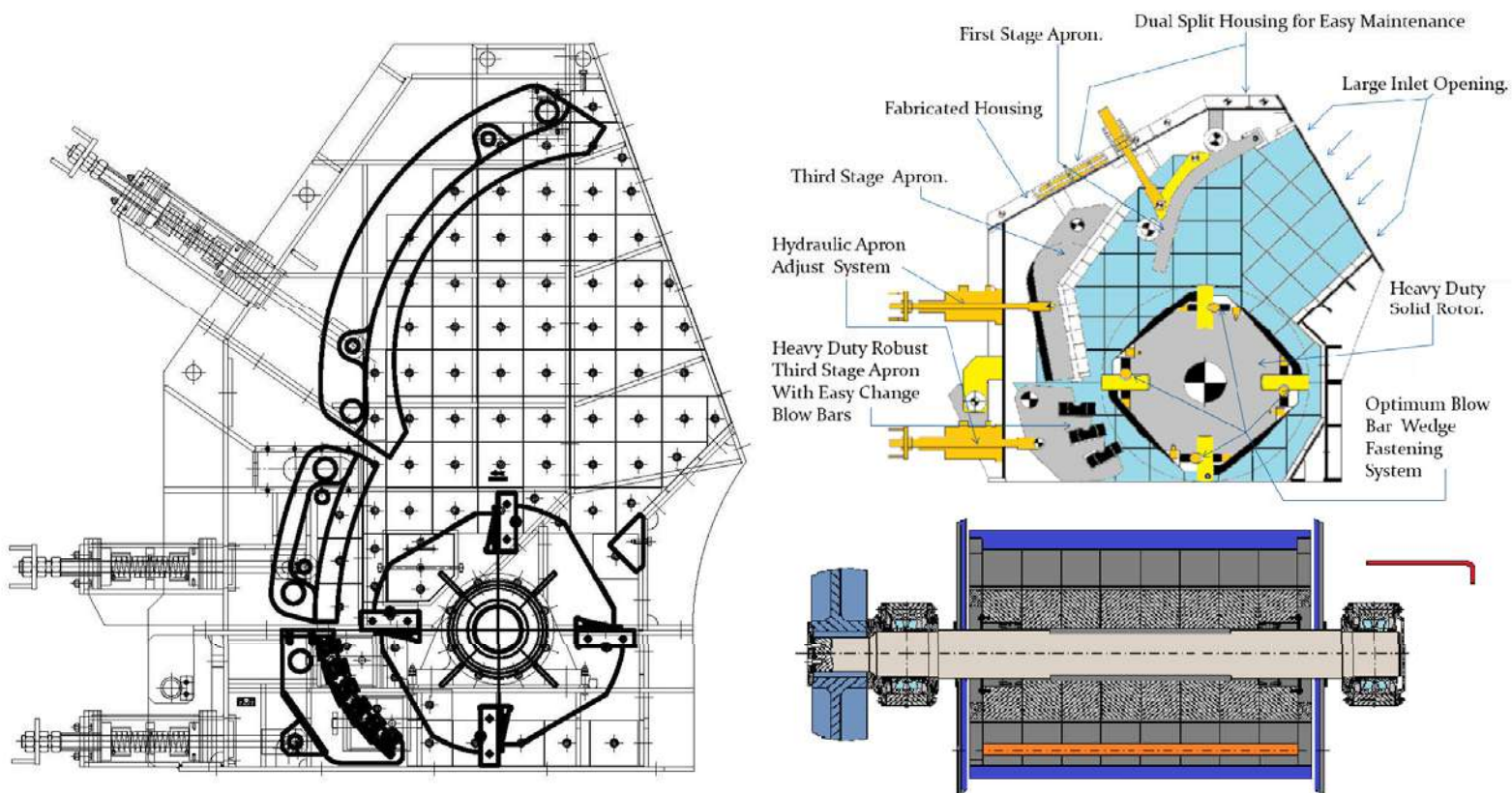
LARGE FEED OPENINGS PREVENTING BLOCKAGE AT CHAMBER ENTRY POINT



Typical  
Impactor  
layout  
drawing







THIS DRAWING IS THE PROPERTY OF BOHRINGER, INC. AND IS NOT TO BE REPRODUCED OR COPIED IN WHOLE OR IN PART, OR USED FOR FURNISHING INFORMATION TO OTHERS, OR FOR ANY OTHER PURPOSE DETRIMENTAL TO THE INTEREST OF BOHRINGER, INC. AND IS TO BE RETURNED UPON REQUEST.



**BOHRINGER, INC.**  
PROCESS EQUIPMENT  
121 MAIN STREET, STE 140  
NORTHPORT NEW YORK 11768

OWNER :	TYPE :	PROJECT :
DATE :	SCALE :	1" = 1' 0" 1" = 1' 0" 1" = 1' 0"
FIELD IMPACT CRUISER NO-15/20		
SHEET NO.		REV. 00





# Specialized Systems



Over the past half century Böhringer equipment can be found in many standard and specialized configurations applied in the processing of difficult to handle materials with high percentages of fines, wet and sticky materials , found in some recycling and mining applications.



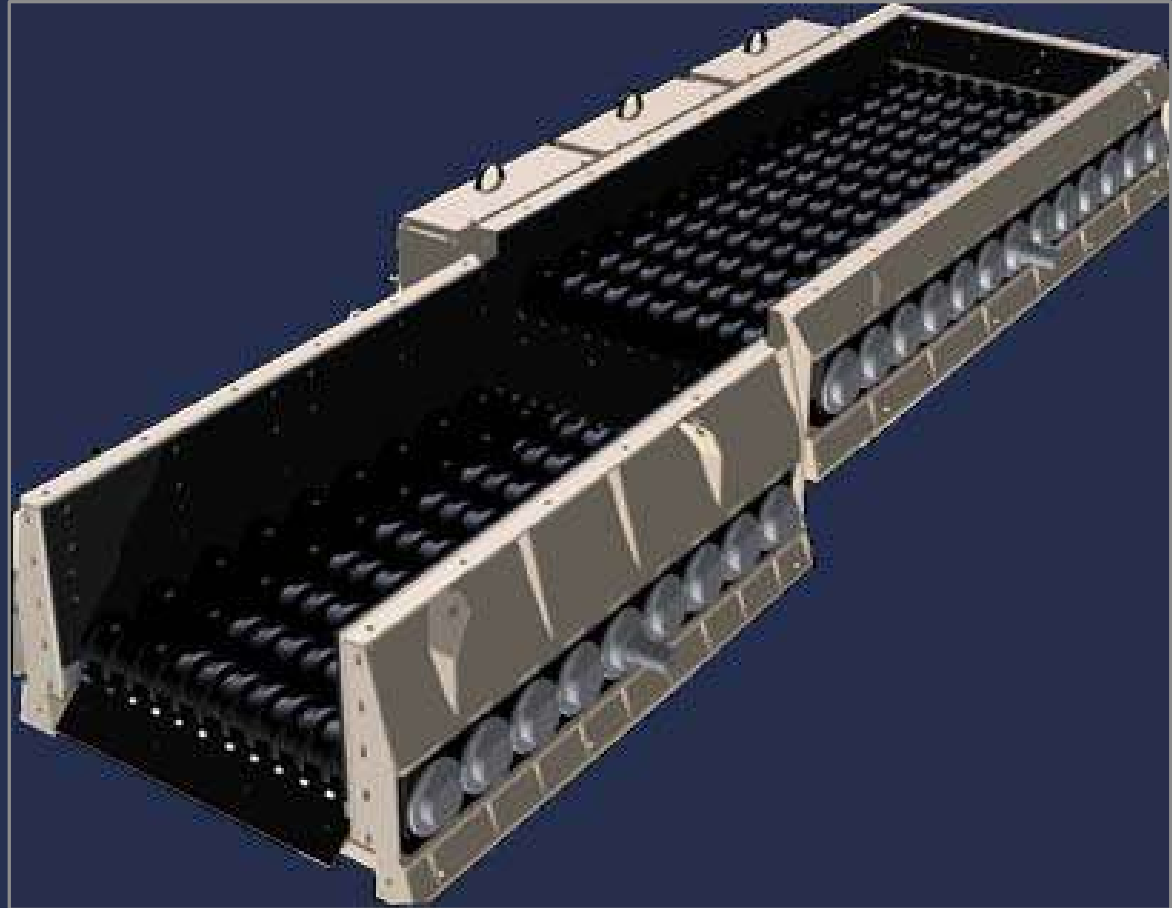




Böhringer RGF (Roller Grizzly Feeders) are the Most efficient technically advanced feeder on the market today, with advance cam change out system reducing down time.

Where material is difficult to handle for example, feed material with exceptionally high percentage of fine's wet or sticky fines with high moisture content the Böhringer series RGF is the perfect solution.

The feeders are ideal for handling bulky green waste material such as tree stumps with soil and stones present , when situated in line with shredders and slow speed grinders reducing ware in the knives and other wear items.





*Difficult applications made easy*

WWW.BOHRINGERINC.COM COMPANY CONFIDENTIAL "ALL RIGHTS ARE RESERVED"

BÖHRINGER  
have been successfully designing and  
building roller grizzly feeders the past  
half century.

Böhringer products can be found in  
some of the toughest applications  
Known to man.

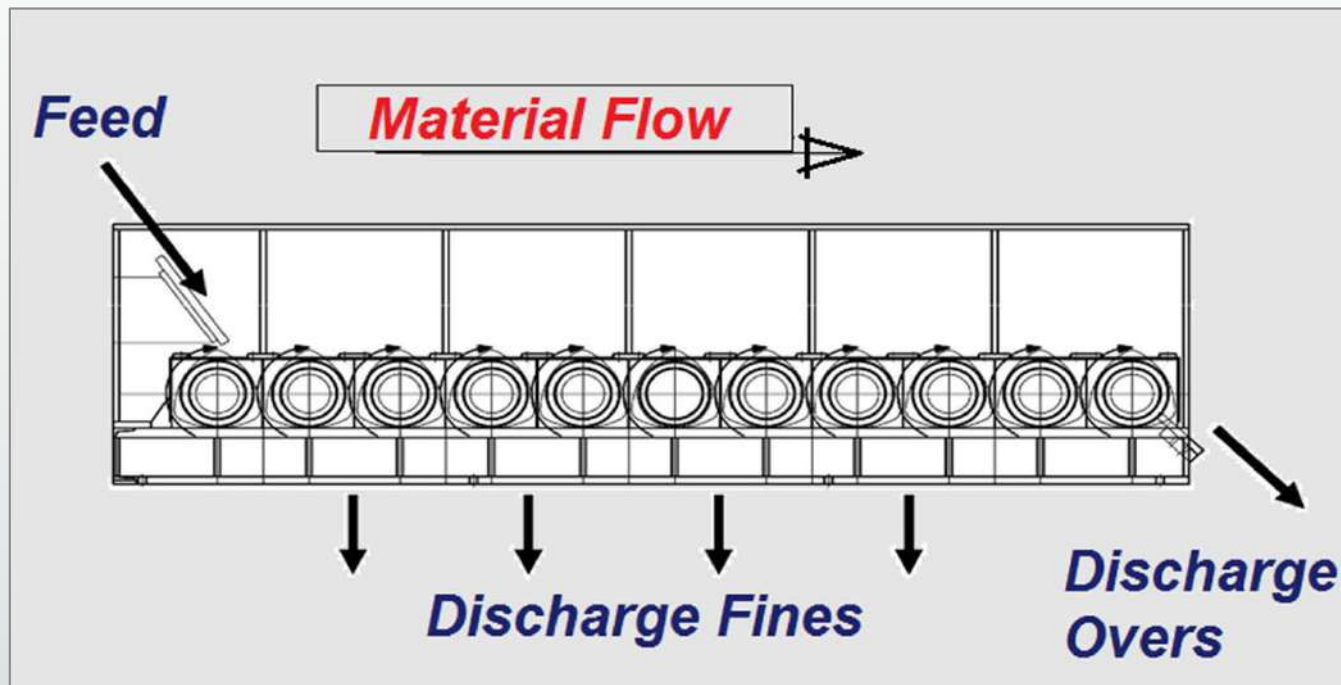
IN:-

USA.  
RUSSIA.  
CANADA  
FRANCE  
SOUTH AFRICA  
SOUTH AMERICA





## “RGF” Principal



*Difficult –sticky feed material/mineral deposits can be successfully processed using single or double stage/step roller grizzly feeders.*

*No:  
Blinding  
Blockages  
100% Self cleaning resulting in Clean feed, fines free for onward processing though Jaw, Impact Systems with increased overall production buy as much as 50% and reduced wear.*

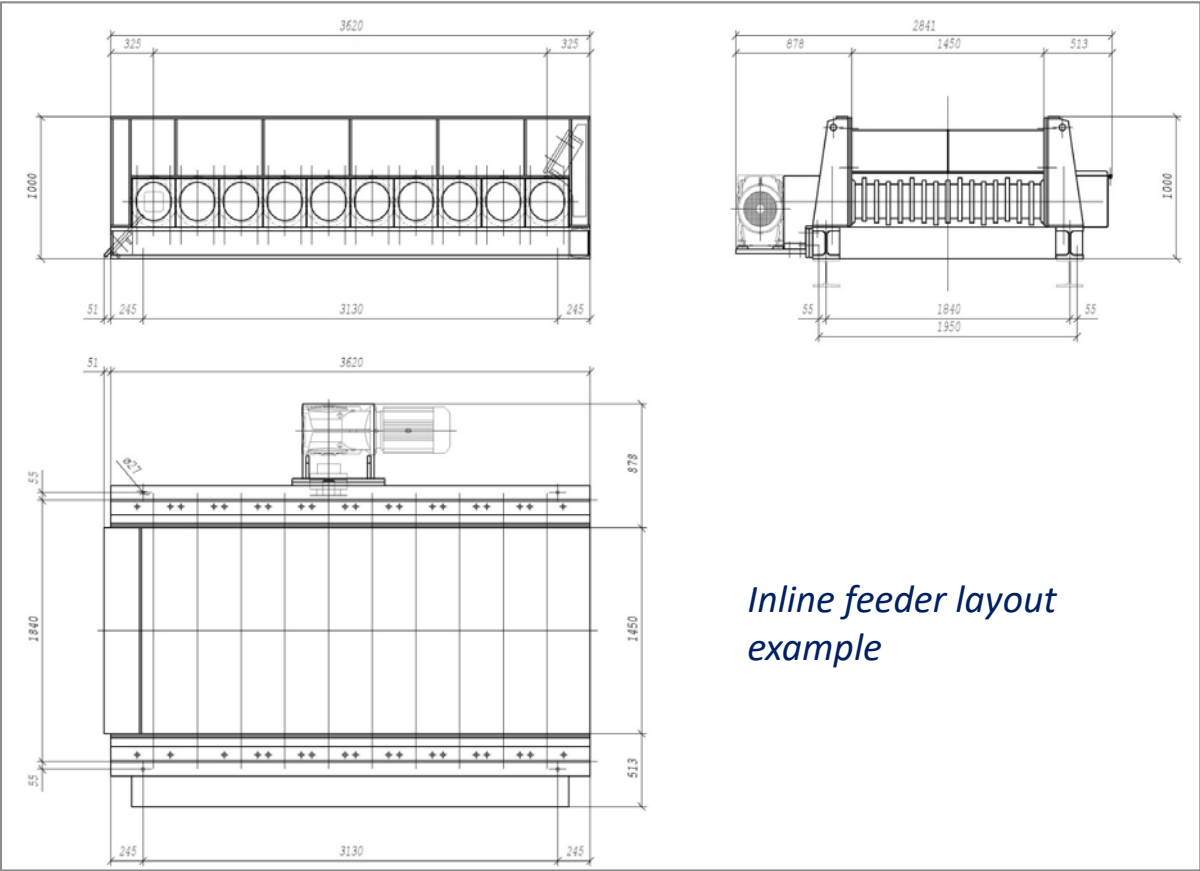


Specialist Crawler Concrete Recycle operating on a live Autobahn Germany 90's.



Full length Roller Grizzly Feeder & Impactor System

WWW.BOHRINGERINC.COM COMPANY CONFIDENTIAL "ALL RIGHTS ARE RESERVED"

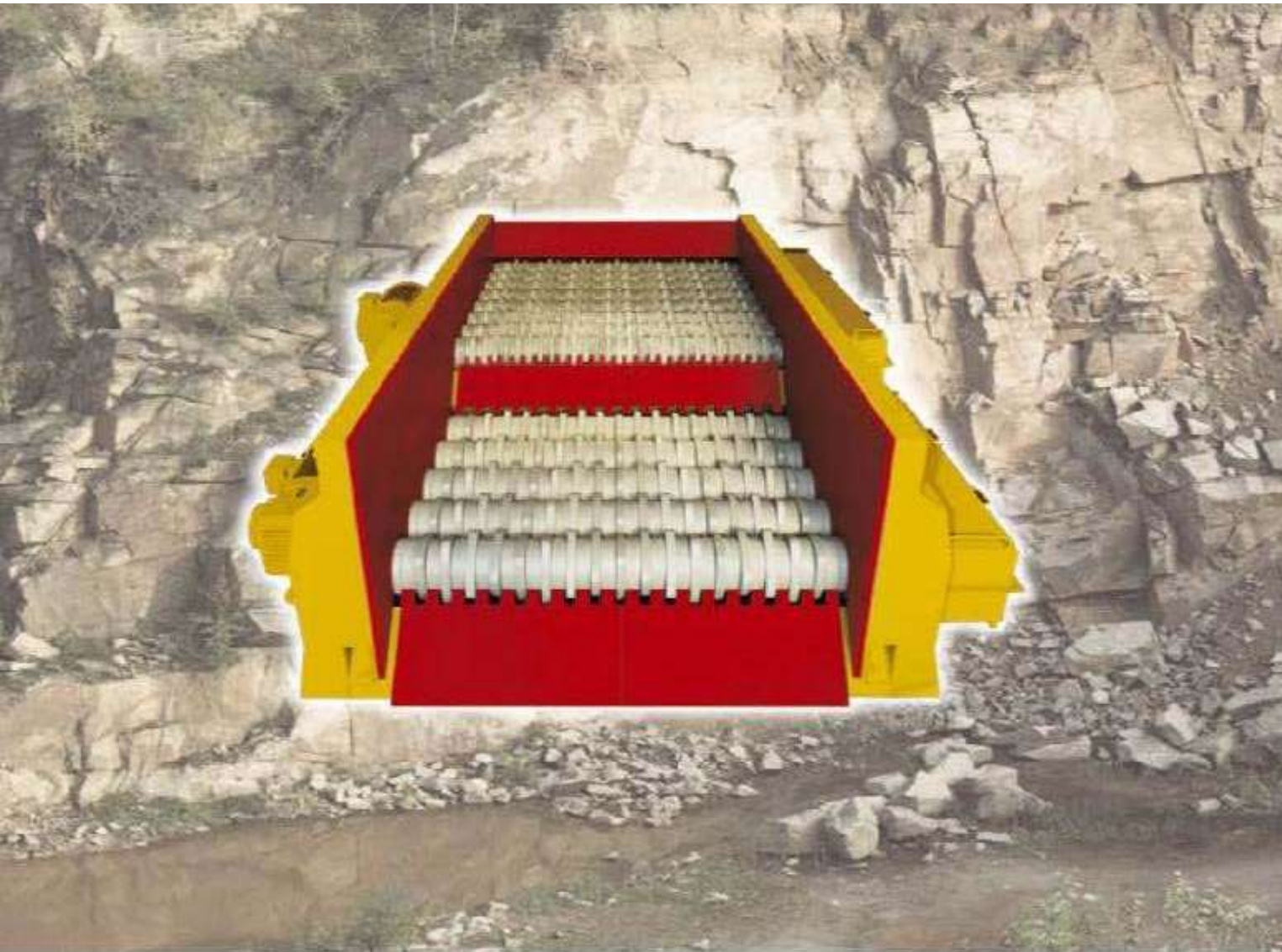


Inline feeder layout example

TYPICAL DIMENSION DRAWING FOR THE:- RMS 1450X3600MM





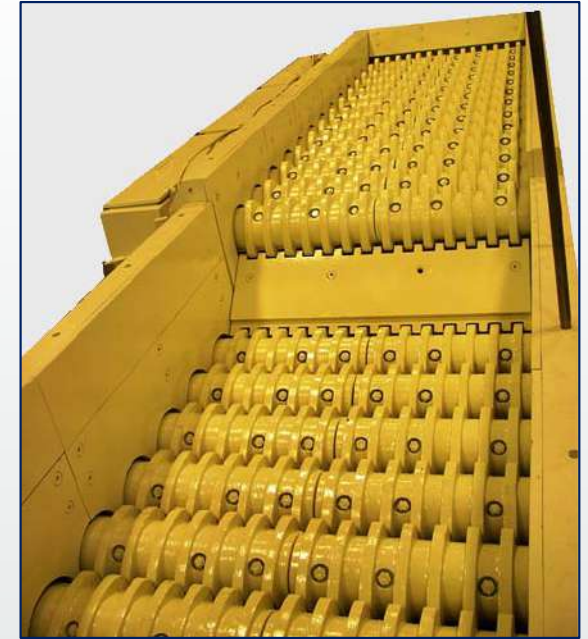
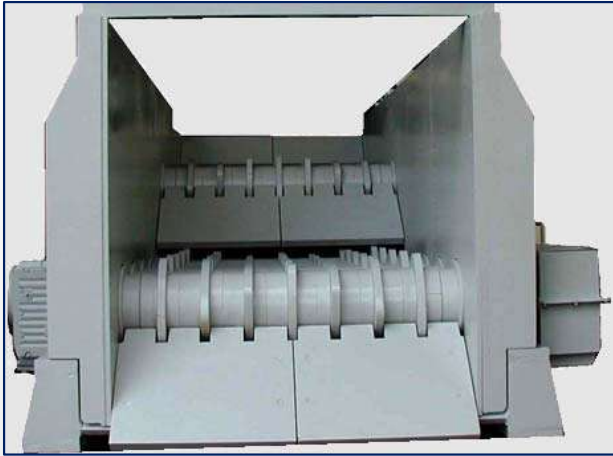


**TWO STAGE ROLLER GRIZZLY  
FEEDER'S.**





## *“RGF” Heavy Duty mining and recycling applications.*



*“Solid” Shaft’s quick  
change Cam’s unique to  
Böhlinger...*

*When Rip Rap  
machines fail, “  
the Böhlinger  
RGF roll’s on  
by..!”*

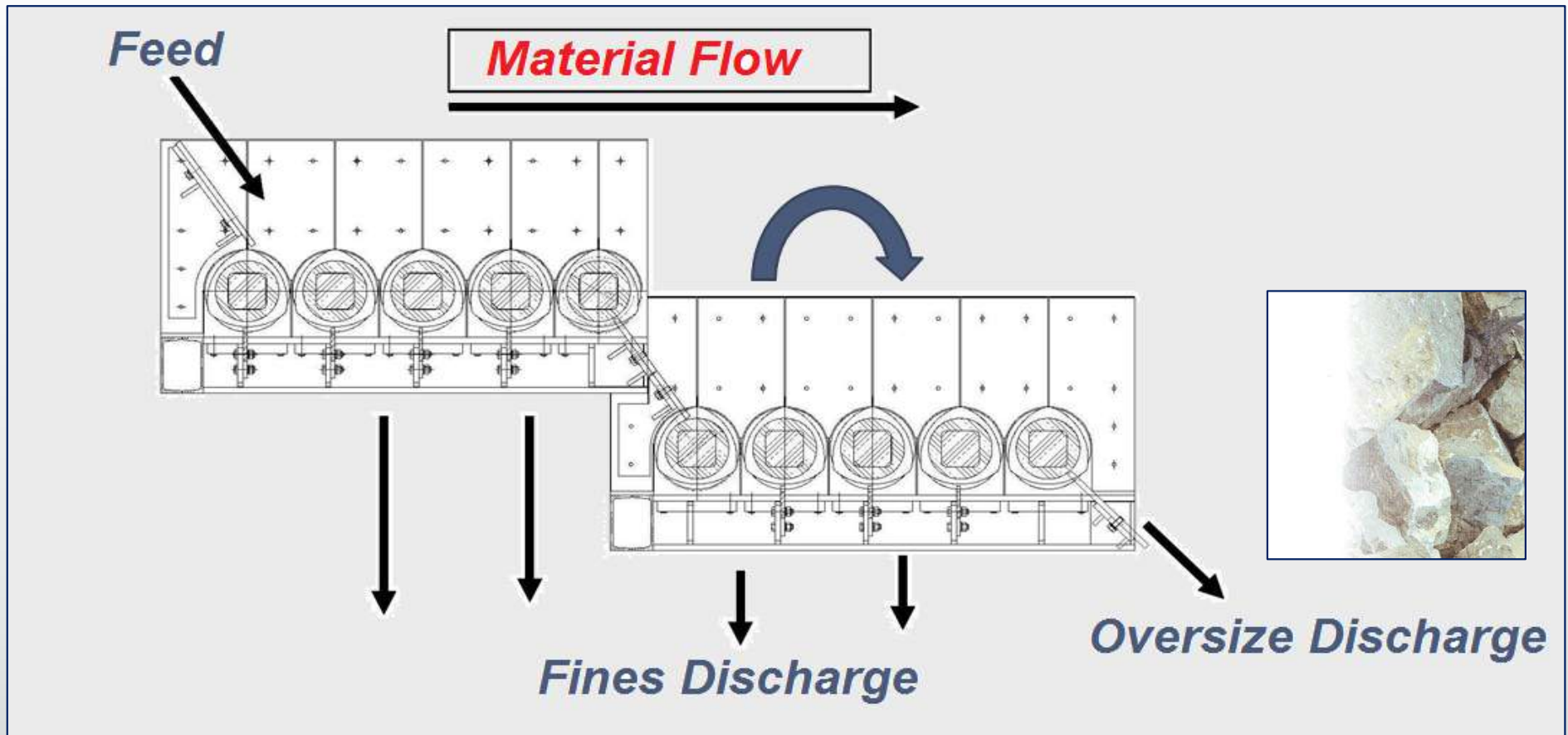




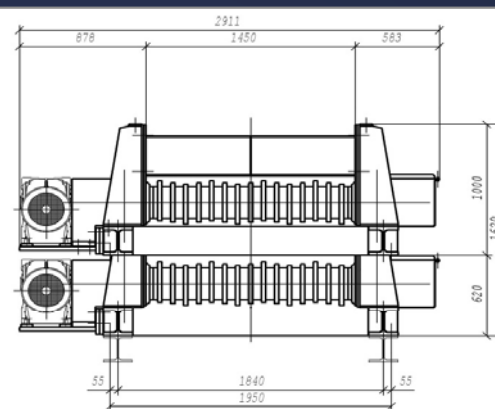
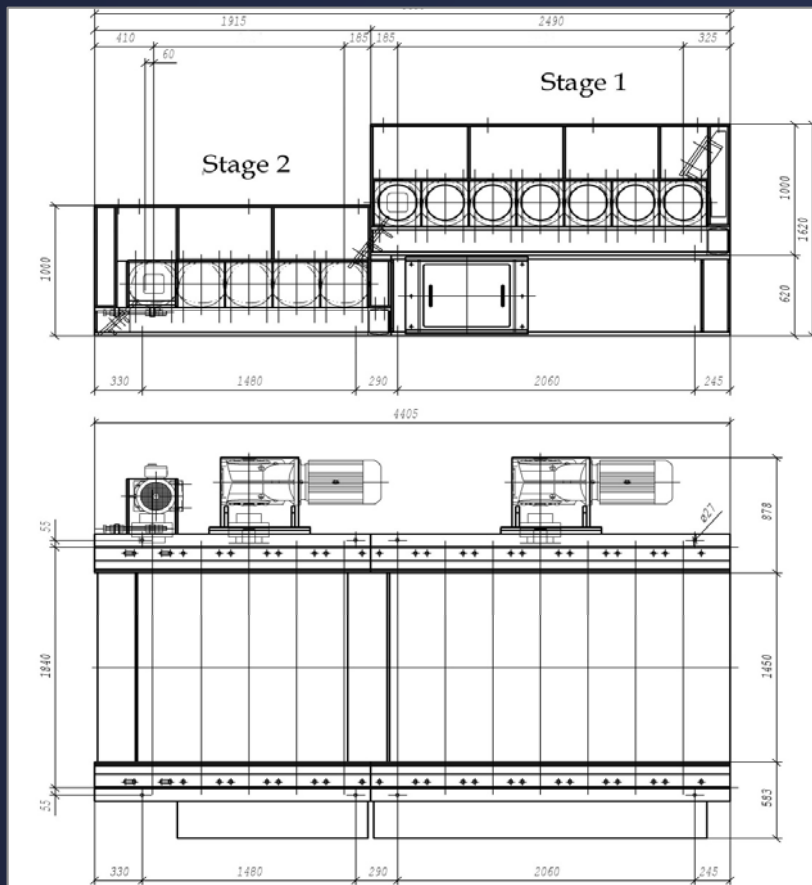
RGF feeders may be used in line with vibration grizzly feeders and screens for cost effective efficient solutions in some cases.



*“RGF” Principal, two stage tumblers (roll’s material) for enhanced separation-throughput*







*TYPICAL DIMENSION DRAWING  
FOR THE:-*

*RMS 1450MM X 4400MM*



## ROLLER GRIZZLY FEEDER DRIVE CHAIN ASSEMBLY



*Heavy Duty Sprocket and Chain's*



*Unique to Böhlinger*

## ROLLER GRIZZLY FEEDER DRIVE ASSEMBLY



*Solid  
Through  
Shafts*

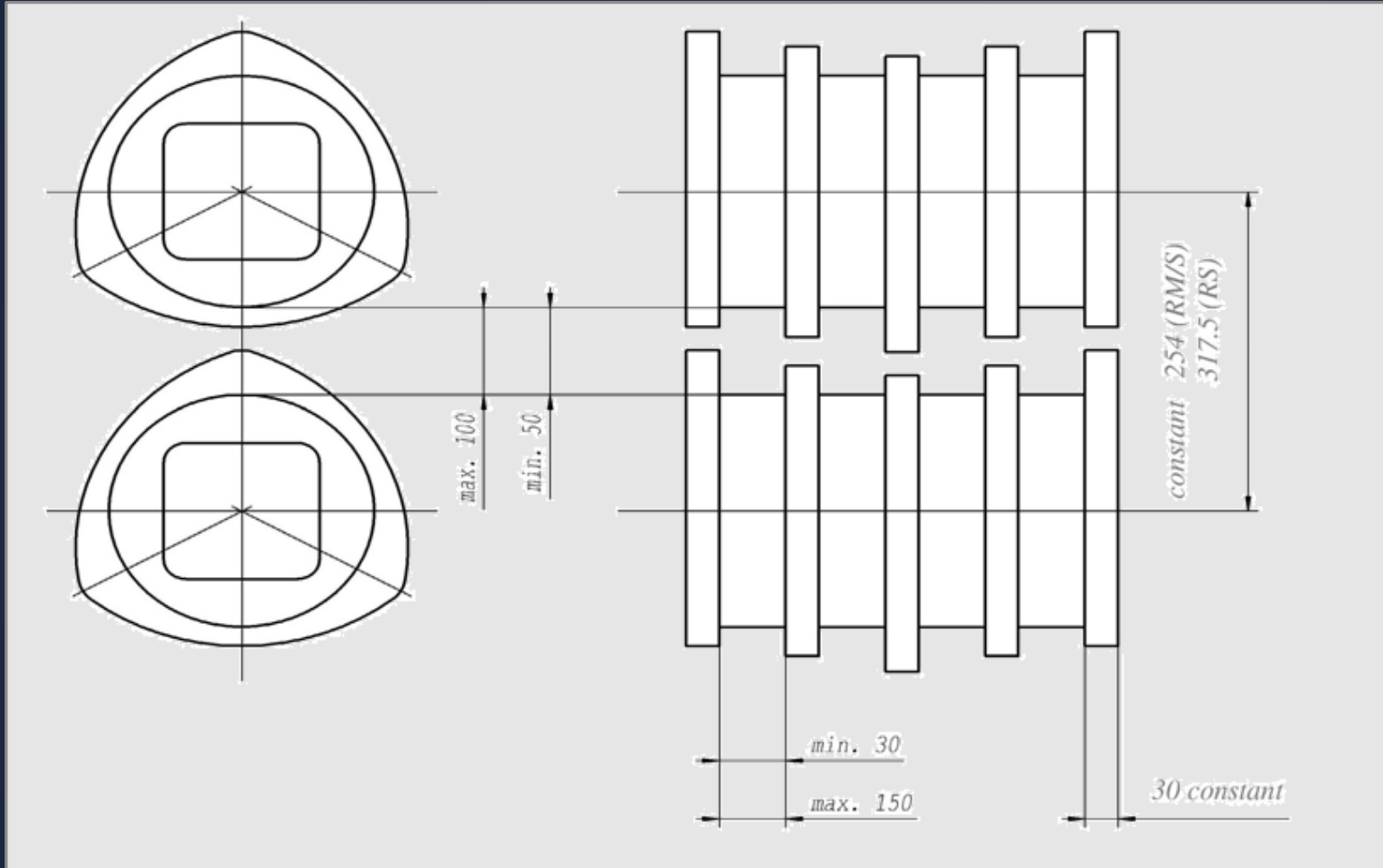
*Heavy Duty bearings and solid housings*

## ROLLER GRIZZLY FEEDER SELF CLEANING ASSEMBLY



*Ease Of Service*





# Decision Guide



## BOHRINGER

### ROLLER GRIZZLY FEEDERS

### SERIES "RM" AND "RS"

Heavy duty feeder scalper for contaminated (wet, sticky or dry) raw materials.



- Uniform feed rate
- Low headroom
- Low horsepower
- No vibration
- Replaceable push-on discs of wear resistant alloy

- Adjustable Scrapers
- Heavy duty solid square shafts and short roller chains
- Long wear life due to special alloy castings

- High performance, High capacity
- Low per ton operating cost
- Made in America



**BOHRINGER, INC.**  
 121 Main Street STE 140 Northport New York 11768 USA  
 Tel (631) 262 7211 Email bohringer1@aol.com - www.bohringerinc.com



**BOHRINGER, INC.**



**The Roller Grizzly Feeder** is generally used as a primary scalper between a vibrating, reciprocating, or apron feeder and a crusher. The unique tumbling action of the discs assures a most efficient separation of fines and conglomerates from the quarried or mined raw material.





Compared to conventional screens or grizzlies, these machines resist clogging in wet or sticky materials and provide self-cleaning of the discs. Material production has been known to increase upwards of 50% due to the scalping efficiency of the roller grizzly feeder which removes the fines and only feeds oversize to the crusher. This furthermore reduces wear cost, since the abrasive fines are removed ahead of the crusher. The heavy duty construction of the roller grizzly feeder offers high availability, top efficiency and low maintenance.



Replaceable cast discs are stacked on the square shafts. Different shapes of discs are available depending on the specific application. The individual shafts are driven through short roller chains (one chain turning two shafts) which are running in an enclosed oil bath. Adjustable scrapers are located under the shafts to prevent plugging and build up between rollers.



## BOHRINGER



# Decision Guide

The Roller Grizzly Feeder consists of:

- heavy duty one-piece welded steel frame
- side walls with bolt-on replaceable wear plates
- solid square shafts with push-on discs of special alloy
- bearing assemblies to support the shafts
- sprockets and chains to turn the shafts
- chain guard with oil bath
- drive assembly with electric motor



The roller grizzly feeder, in its standard configuration, is driven through an electric motor, vee-belt drive and gear reducer. Its output shaft is connected to the feeder input shaft by a flexible coupling. Variable speed drive is available upon request.



**BOHRINGER, INC.**



The lower frame has two pedestals for mounting the bolt-on bearing housings. Large spherical roller bearings with labyrinth rings and dust seals support the square shafts.



## ROLLER GRIZZLY FEEDER

Series "RM" - Feed size up to 1000 mm (40") edge length; max. drop height 750 mm (29")

MODEL	Width-Length		No. of Shafts	Motor (HP)	Approx. Weight (Lbs)*
	mm	inches			
950 x 4600	37 1/2 x 181 1/8		19	2 x 20	20,600
950 x 5100	37 1/2 x 200 3/4		19	2 x 20	25,600
950 x 5300	37 1/2 x 209 11/16		22	2 x 20	32,800
1030 x 2050	40 1/2 x 80 3/4		7	10	12,500
1030 x 2300	40 1/2 x 90 1/2		8	10	13,900
1030 x 2550	40 1/2 x 100 3/8		9	10	15,400
1070 x 3100	42 1/8 x 122 1/16		11	20	16,500
1070 x 3350	42 1/8 x 210 5/8		20	30	28,600
1190 x 6600	46 7/8 x 269 7/8		25	2 x 20	41,100
1220 x 2650	48 x 104 5/16		9	15	17,300
1270 x 2050	50 x 80 3/4		7	10	12,800
1270 x 2300	50 x 90 1/2		8	10	14,100
1270 x 2550	50 x 100 3/8		9	15	15,800
1270 x 2800	50 x 110 1/4		10	15	17,500
1270 x 3050	50 x 120		11	15	19,100
1270 x 3300	50 x 130		12	20	20,600
1270 x 3550	50 x 139 3/4		13	20	22,400
1270 x 3800	50 x 149 5/8		14	20	24,100
1350 x 2300	53 1/8 x 90 1/2		8	15	15,300
1350 x 2550	53 1/8 x 100 3/8		9	15	17,100
1350 x 2800	53 1/8 x 110 1/4		10	15	18,900
1350 x 3050	53 1/8 x 120		11	15	20,500
1350 x 3300	53 1/8 x 130		12	20	22,300
1350 x 3550	53 1/8 x 139 3/4		13	20	24,100
1350 x 3800	53 1/8 x 149 5/8		14	20	25,800
1350 x 4200	53 1/8 x 165 3/8		15	30	31,000
1350 x 6100	53 1/8 x 240 3/16		23	2 x 25	43,000
1510 x 3012	59 1/2 x 120		11	20	22,200
1510 x 3300	59 1/2 x 130		12	20	24,100
1510 x 3550	59 1/2 x 139 3/4		13	25	25,900
1510 x 3800	59 1/2 x 149 5/8		14	25	27,600
1510 x 4200	59 1/2 x 165 3/8		15	30	29,600
1510 x 9000	59 1/2 x 181 1/8		34	2 x 30	67,600
1800 x 6500	70 7/8 x 255 15/16		24	2 x 30	55,000

## ROLLER GRIZZLY FEEDER

Series "RS" - Feed size up to 1500 mm (60") edge length; max. drop height 1000 mm (40")

MODEL	Width-Length		No. of Shafts	Motor (HP)	Approx. Weight (Lbs)*
	mm	inches			
1220 x 4700	48 x 185		12	30	37,000
1220 x 5042	48 x 198 1/2		14	2 x 25	41,000
1350 x 3000	53 1/8 x 118 1/8		9	15	25,900
1350 x 3300	53 1/8 x 130		10	20	28,300
1350 x 3600	53 1/8 x 141 3/4		11	25	30,600
1350 x 4000	53 1/8 x 157 1/2		12	30	32,900
1350 x 4300	53 1/8 x 170 1/2		13	2 x 25	38,100
1450 x 3000	57 1/8 x 118 1/8		9	20	26,100
1450 x 3300	57 1/8 x 130		10	25	28,500
1450 x 3400	57 1/8 x 133 7/8		10	25	32,900
1450 x 3600	57 1/8 x 141 3/4		11	25	30,900
1450 x 4000	57 1/8 x 157 1/2		12	30	33,300
1530 x 3300	60 1/4 x 130		10	25	28,600
1530 x 3600	60 1/4 x 141 3/4		11	25	31,100
1530 x 4000	60 1/4 x 157 1/2		12	30	33,700
1530 x 5000	60 1/4 x 196 7/8		15	40	39,700
1570 x 3700	61 7/8 x 145 3/4		11	30	31,900
1610 x 3300	63 3/8 x 130		10	30	31,500
1610 x 3600	63 3/8 x 141 3/4		11	30	34,300
1610 x 4000	63 3/8 x 157 1/2		12	30	37,200
1610 x 4300	63 3/8 x 169 1/4		13	30	39,900
1800 x 3600	70 7/8 x 141 3/4		11	40	34,300
1800 x 4000	70 7/8 x 157 1/2		12	40	37,400
1800 x 4700	70 7/8 x 185		14	40	42,100
2000 x 4000	78 3/4 x 157 1/2		12	40	39,700

\*Note: Weight changes with gap opening between discs. Design specifications subject to change without notice. Technical data are approximate and should be used as a guide only. Capacity and power requirements depend on the type and characteristics of the feed material.



**BOHRINGER, INC.**

121 Main Street STE 140 Northport New York 11768

Tel (631) 262 7211- Email bohringer1@aol.com - www.bohringerinc.com



**BÖHRINGER**



*At Böhrringer we  
focus on the solution  
not the problem, the  
solution take's care  
of "that"*







Böhringer.  
121 Main Street STE 140  
Northport New York 11768  
T: (631) 262 7211  
bohingerusa@gmail.com



[www.bohringerinc.com](http://www.bohringerinc.com)

The material in this specification is for general information and guidance only. No representation is made or given by Böhringer .Inc. that its products will be suitable for a user's particular purpose. All related inquiries should always be directed to Bohringer. Inc. to ensure suitability at all times. Whilst reasonable efforts have been made in preparation of this document to ensure its accuracy Böhringer . Inc. assumes no liability resulting from errors or omissions in this document or from the use or interpretation of the information contained herein. Böhringer . Inc. reserves the right to change or omit information both in this document and in the product design without reservation and notification to users.